

Wireless N Router TL-WR841N



300Mbps wireless transmission rate with 2 antennas, brings smooth wireless N experience

MIMO, CCA™ technology, brings competitive performance in 11n routers

QSS, Quick Secure Setup at a push of button



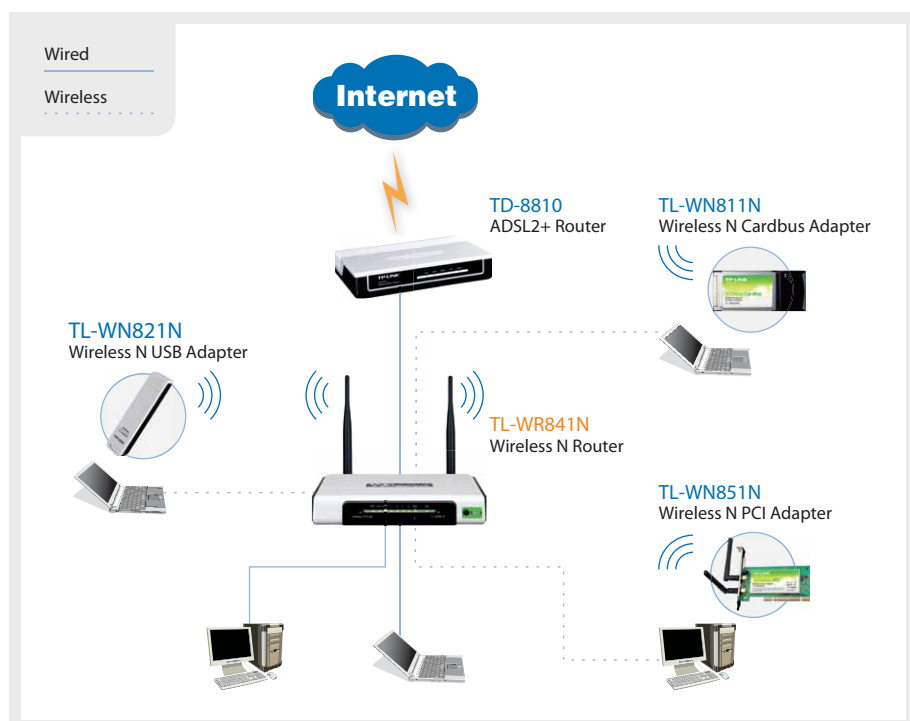
Description:

The TL-WR841N Wireless N Router is a combined wired/wireless network connection device designed specifically for small business, office and home networking requirements. It provides a simple, very fast, pleasing way to access internet or Ethernet without cables for work or fun. It complies with the IEEE 802.11n standard with wireless transmission speeds of up to 300Mbps. The router features 4 10/100M switch ports to achieve the most effective data transmission. TL-WR841N adopts MIMO technologies, has two external fixed Omni directional antennas providing even better wireless performance, transmission rates, stability and coverage. CCA™ technology automatically avoids channel conflicts using its channel selection feature. It also works well with other 11g and 11n protocol wireless products. TL-WR841N also provides easy and quick security setup with WPS (WiFi Protected Setup) standard, get network safety at the push of a button.

Specifications:

Standards	IEEE 802.11n, IEEE 802.11g, IEEE 802.11b
Interface	4 10/100M auto-sensing LAN Port(Auto MDI/MDIX) 1 10/100M auto-sensing WAN Port(Auto MDI/MDIX)
Wireless Signal Rates With Automatic Fallback	11n: 270/243/216/162/108/81/54/27Mbps 135/121.5/108/81/54/40.5/27/13.5Mbps 130/117/104/78/52/39/26/13Mbps 65/58.5/52/39/26/19.5/13/6.5Mbps 11g: 54/48/36/24/18/12/9/6M(dynamic) 11b: 11/5.5/2/1M(dynamic)
Frequency Range	2.4-2.4835GHz
Wireless Transmit Power (MAX)	20dBm
Antenna	3dBi fixed Omni directional antenna x 2
Modulation Technology	DBPSK, DQPSK, CCK, OFDM, 16-QAM, 64-QAM
Receiver Sensitivity	270M: -68dBm@10% PER; 130M: -68dBm@10% PER 108M: -68dBm@10% PER; 54M: -68dBm@10% PER 11M: -85dBm@8% PER; 6M: -88dBm@10% PER 1M: -90dBm@8% PER
Power Supply Unit	Input: localized to country of sale Output: 9VDC/0.85A switching PSU
Operating Temperature	0°C~40°C (32°F~104°F)
Storage Temperature	-40°C~70°C (-40°F~158°F)
Relative Humidity	10% ~ 90%, non condensation
Storage Humidity	5%~95% non-condensing
Dimensions	6.9 x 4.4 x 1.2 in. (174 x 111 x 30 mm)

Diagram:



Features:

- 300M wireless transmission rate, adopts MIMO, CCA™ technology, allows for faster speed, further wireless coverage, more stable performance
- For home and office use, Supports PPPoE, Dynamic IP, and static IP broadband access and various kind of dialing requirements
- Supports UPnP, DDNS, static routing, VPN Pass-through, and data forwarding
- Built-in firewall features IP, MAC, URL filtering which flexibly controls online access and time
- Supports QSS (Quick Secure Setup), Provides 64/128/152-bit WEP encryption, supports WPA/WPA2, WPA-PSK/WPA2-PSK authentication
- User interface supports free WEB software updates
- Sleek exterior, can be mounted on a wall or placed horizontally on a table or desk
- 2 fixed Antennas (reverse SMA connector)

Package:

- Wireless N Router TL-WR841N
- Two 3dBi fixed Antennas
- Power supply unit (localized to country of sale)
- Resource CD
- Quick Setup Guide

Related Products:

- Wireless N PCI Adapter TL-WN851N
- Wireless N USB Adapter TL-WN821N
- SOHO Cable/DSL Router TL-R460
- 10/100M Desktop Switch TL-SF1005

Specifications are subject to change without notice. TP-LINK is a registered trademark of TP-LINK Technologies Co., Ltd. Other brands and product names are trademarks or registered trademarks of their respective holders. No part of the specifications may be reproduced in any form or by any means or used to make any derivative such as translation, transformation, or adaptation without permission from TP-LINK Technologies Co., Ltd.