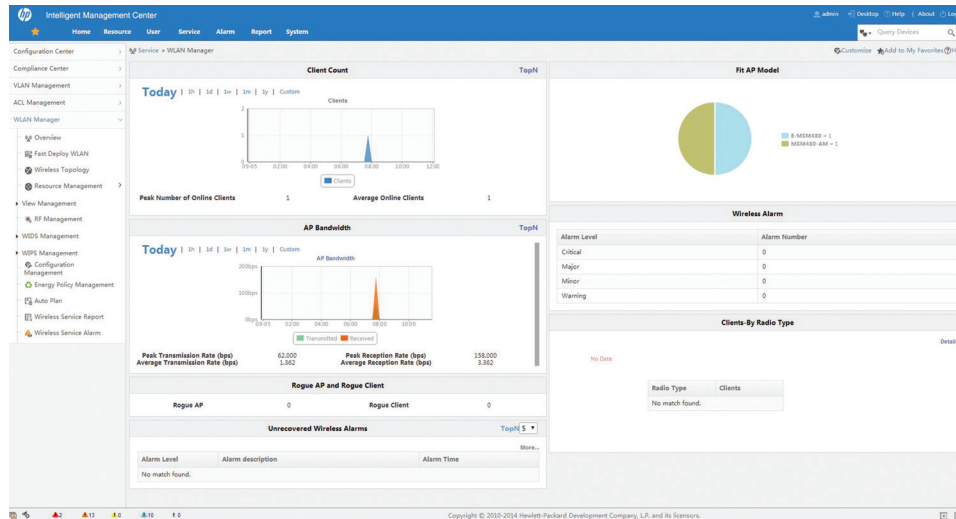


HP IMC Wireless Services Manager software



Key features

- Intuitive, easy-to-use interface
- Unified wired and wireless device management
- Security features as WIDS, WIPS, Spectrum Guard
- Topology, alarm, energy policy and RF management
- Low maintenance costs and low TCO

Product overview

HP Intelligent Management Center (IMC) software is a modular comprehensive resource management platform. With its extensive device support, IMC software provides true end-to-end management for the entire network, and entire operation cycle.

An optional IMC module, HP IMC Wireless Services Manager (WSM) software provides unified management of wired and wireless networks, adding network management functions into existing wired network management systems. IMC WSM software offers wireless LAN (WLAN) device configuration, topology, performance monitoring, RF heat mapping, and WLAN service reports.

IMC WSM software facilitates centralized control over your wireless network, even if it is geographically dispersed. This reduces the time needed to deploy configuration changes and provides uniformity throughout your WLAN infrastructure.

Features and benefits

Management

- WLAN device management

Manages HP MSM series ACs, fat APs (also called autonomous APs), and fit APs (also called controlled APs) through SNMP and protocol buffers, and manages Comware-based ACs, fat APs, and fit APs through SNMP; it also supports the Cisco wireless and Aruba wireless devices (Consult HP about the models supported by WSM). IMC WSM is able to manage up to 8,000 fit APs

- WLAN management

- View and manage device information

- View and export client history

- Show and modify radio information

- View information about devices that provide wireless services with the same SSID and display information about fat APs, fit APs, and clients of specified SSID

- Collect statistics on access ports of all manageable fat APs, fit APs, and rogue APs

- Query information about AP access ports and enable or disable PoE

- Wireless service alarming

Promptly detect and resolve faults on the network. Polls wireless devices periodically to test their reachability and generates traps for unreachable devices. Generates alarms based on the traps received from ACs and fat APs, according to system and user defined alarm rules in the alarm management module. Administrators can set thresholds for WLAN performance monitoring to generate appropriate alarms

- Wireless performance monitoring

Provides basic and extended performance monitoring and real-time monitoring for online fat APs, fit APs, and clients

- Batch configuration wizard

The batch configuration wizard can help users configure the WLAN network step by step

- Wireless topology

Provides wireless device topology (ACs and fat APs in WSM), Location view topology (APs and associated clients), custom view topology (fit APs and associated clients managed by a specific AC) and mesh topology (AC and fat AP, MPP, MP, and MAP connections in a mesh network and client information)

- RF management
 - Includes network planning management and RF management
 - Helps to select AP models and plan AP deployment by analyzing signal coverage at specific locations before you purchase APs
 - Creates a heat map predicated on the radio type, transmission rates, and obstacles such as concrete walls, windows, and metal barriers
 - Can sort APs by signal strength, access rate, channel, or SSID.
- Client management

Helps manage online clients, client online history, and client information. It displays all online clients that are connected to the WLAN on a client list to facilitate your management, including query client lists, detailed client information, export client information, configure sampling clients, modify client information, and view real-time client monitoring and history
- Performance monitoring

Displays graphs and performance charts for wireless devices status, wireless alarms statistics, online client trending, and AP traffic monitoring; users can define tasks to monitor performance items of interest
- WLAN reports

Analyzes the data collected by WSM and also summarizes the performance data, such as AP performance, utilization, and service availability, and displays the data in a bar chart, line chart, or pie chart
- Wireless terminal trace display

Logs the online and offline records of a wireless terminal and uses these records to display the movements of the wireless terminal in the location view
- WDS/mesh management

Allows for managing of MP policy, mesh profile, mesh interface, and peer MAC address configurations for a specific wireless device
- PoE port management

Automatically learns which APs are connected to a switch's PoE ports, enabling control of those PoE ports; fault AP can be set to perform a cold restart, which will be a fast resume
- Wireless intrusion prevention system (WIPS)

Helps protect enterprise networks and users from unauthorized wireless access according to user-defined security policies. WIPS divides WLAN into multiple virtual security domains and adds sensors (APs with IPS enabled) to each virtual security domain. WIPS requires a license and HP Wireless (Comware OS)

- Wireless intrusion detection system
Provides early detection of malicious attacks and intrusions on a wireless network
- Support for radio resource management
Provides configuration management of radio resources, including auto power, auto channel, and scheduling
- Wireless location management
Locates online clients, rogue clients, rogue APs, and iNode clients so that operators can determine the physical locations of wireless clients and rogue devices locate APs and connected clients. WSM supports AP-based sampling, and iNode-based sampling. Additional license is required
- Real-time spectrum guard
Scans the 2.4 GHz and 5 GHz frequency bands to detect interference and affected channels, as well as to generate real-time spectrum data; operators can obtain the wireless spectrum performance and WLAN security by viewing the current interference data and real-time spectrum data; real-time spectrum guard requires a license
- Network evaluation
Enables to determine the AP operating status in an area to optimize the network based on the evaluation results and records. WSM periodically collects data for APs and clients in the specified location view and summarizes the collected data and evaluates the APs and clients based on the predefined thresholds. HP Wireless (Comware OS) is required
- Energy Policy Management
Allows you to apply policies to wireless devices for energy saving and cost reduction. Manageable wireless devices are APs, radios, and SSIDs

Warranty and support

- Electronic and telephone support
Limited electronic and business-hours telephone support is available from HP for the entire warranty period; to reach our support centers, refer to hp.com/networking/contact-support; for details on the duration of support provided with your product purchase, refer to hp.com/networking/warrantysummary
- Software releases
To find software for your product, refer to hp.com/networking/support; for details on the software releases available with your product purchase, refer to hp.com/networking/warrantysummary

HP IMC Wireless Services Manager software

Specifications

HP IMC Wireless Service Manager Software Module with 50-Access Point E-LTU (JF414AAE)	
Minimum system requirements	Refer to the IMC WSM Release Notes for details about minimum system requirements
System requirements recommended	Refer to the IMC WSM Release Notes for details about system requirements recommended
Software Requirements	<p>Operating system (Versions marked X64 are recommended):</p> <ul style="list-style-type: none"> • Windows Server 2008 with Service Pack 2 • Windows Server 2008 X64 with Service Pack 2 • Windows Server 2008 R2 with Service Pack 1 • Windows Server 2012 with KB2836988 • Windows Server 2012 R2 • Red Hat Enterprise Linux 5 (Enterprise and Standard versions only) • Red Hat Enterprise Linux 5 X64 (Enterprise and Standard versions only) • Red Hat Enterprise Linux 5.5 (Enterprise and Standard versions only) • Red Hat Enterprise Linux 5.5 X64 (Enterprise and Standard versions only) • Red Hat Enterprise Linux 5.9 (Enterprise and Standard versions only) • Red Hat Enterprise Linux 5.9 X64 (Enterprise and Standard versions only) • Red Hat Enterprise Linux 6.1 X64 (Enterprise and Standard versions only) • Red Hat Enterprise Linux 6.4 X64 (Enterprise and Standard versions only) <p>VMware:</p> <ul style="list-style-type: none"> • VMware Workstation 6.5.x • VMware Workstation 9.0.x • VMware ESX Server 4.x • VMware ESX Server 5.x <p>Hyper-V:</p> <ul style="list-style-type: none"> • Windows Server 2008 R2 Hyper-V • Windows Server 2012 Hyper-V <p>Database:</p> <ul style="list-style-type: none"> • Microsoft SQL Server 2008 Service Pack 3 (Windows only) • Microsoft SQL Server 2008 R2 Service Pack 2 (Windows only) • Microsoft SQL Server 2012 Service Pack 2 (Windows only) • Microsoft SQL Server 2014 (Windows only) • Oracle 11g Release 1 (Linux only) • Oracle 11g Release 2 (Linux only) • MySQL Enterprise Server 5.1 (Linux and Windows) (Up to 1000 devices are supported) • MySQL Enterprise Server 5.5 (Linux and Windows) (Up to 1000 devices are supported) • MySQL Enterprise Server 5.6 (Linux and Windows) (Up to 1000 devices are supported)
Browser supported	Refer to the IMC WSM Release Notes for details about browser supported
Services	Refer to the HP website at hp.com/networking/services for details on the service-level descriptions and product numbers. For details about services and response times in your area, please contact your local HP sales office.

HP IMC Wireless Services Manager software accessories

License

HP IMC Wireless Service Manager 50-Access Point E-LTU (JF415AAE)
HP IMC Wireless Services Manager Components Location Service Package E-LTU (JG142AAE)
HP IMC Wireless Service Manager / Real-Time Location Services Additional 50-node E-LTU (JG759AAE)
HP IMC Wireless Service Manager / Real-Time Spectrum Guard E-LTU (JG816AAE)
HP IMC Wireless Service Manager / WIPS Software 50-sensor E-LTU (JH046AAE)
HP IMC Wireless Service Manager / WIPS Additional 50-sensor E-LTU (JH047AAE)
HP PCM Mobility Manager to IMC Wireless Service Manager Upg with 250-node E-LTU (JG769AAE)

Learn more at
hp.com/networking

Sign up for updates
hp.com/go/getupdated



Share with colleagues



Rate this document

© Copyright 2010–2014 Hewlett-Packard Development Company, L.P. The information contained herein is subject to change without notice. The only warranties for HP products and services are set forth in the express warranty statements accompanying such products and services. Nothing herein should be construed as constituting an additional warranty. HP shall not be liable for technical or editorial errors or omissions contained herein.

VMware is a registered trademark of VMware Inc., in the United States and/or other jurisdictions. Intel Xeon, Intel Core, Pentium, and Intel are trademarks of Intel Corporation in the U.S. and other countries. Microsoft, Windows, and Windows Server are U.S. registered trademarks of the Microsoft group of companies. Red Hat is a registered trademark of Red Hat, Inc. in the United States and other countries. Linux is the registered trademark of Linus Torvalds in the U.S. and other countries.

